

SR 874/Don Shula Expressway Ramp Connector to SW 128th Street

Project Overview

MDX started construction of new access ramp connection from the southern terminus of SR 874/Don Shula Expressway to SW 128th Street including improvements to SW 128th Street from SW 122nd Avenue to SW 137th Avenue. This new ramp will provide expressway access to the growing southwest Miami-Dade communities, presently only serviced by access to and from Florida's Turnpike, through the SW 120th Street and the SW 152nd Street ramps, which are congested in the mornings and evenings when residents are traveling to and from work. The project will require the widening of SW 128th Street from two to four lanes from SW 122nd Avenue to SW 137th Avenue.

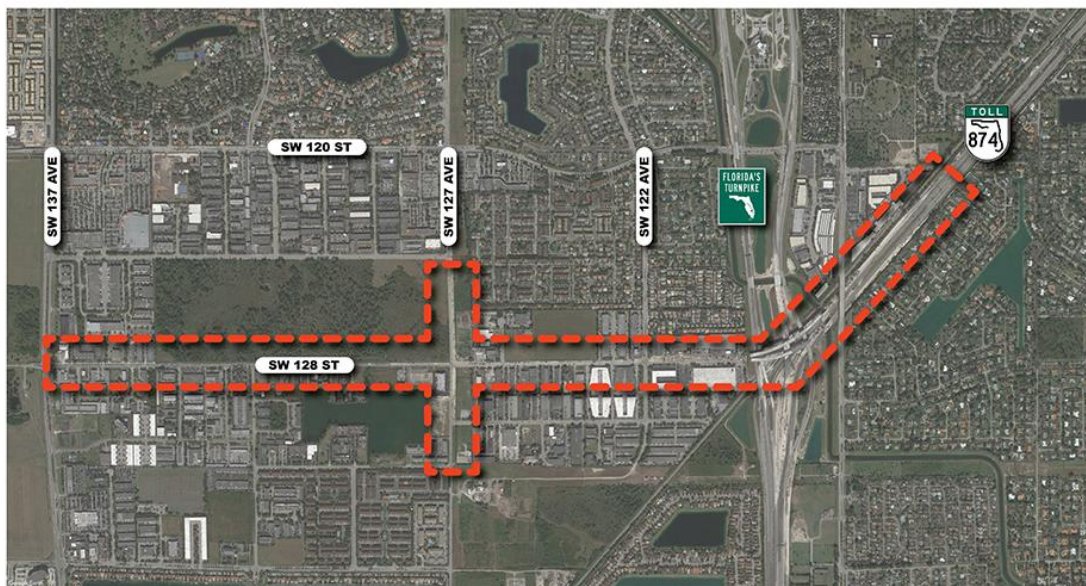
Status of the Project

Construction started in April 2017, with an estimated completion date of 2021. Completion of improvements to SW 128th Street from SW 137th Avenue to SW 122nd Avenue is anticipated for summer/fall 2020.

Project Benefits

The SR 874/Don Shula Ramp Expressway Ramp Connector will provide alternative expressway access in the area, reducing congestion and providing additional connectivity and mobility to the rapidly growing area of southwest Miami-Dade County. The project will provide greater accessibility to major employment and activity centers located east of this area.

Project Area



For More Information: Contact Tere Garcia, Public Information Officer
Phone: 786.277.9292 | E-mail: tgarcia@mdxway.com

The Miami-Dade Expressway Authority (MDX) operates and maintains five expressways: SR 112/Airport Expressway, SR 836/Dolphin Expressway, SR 874/Don Shula Expressway, SR 878/Snapper Creek Expressway, and SR 924/Gratigny Parkway. MDX is funded almost entirely by toll revenue and is dedicated to moving Miami-Dade County forward by making your commute safer and more efficient.